



# KRISHNA INFRASTRUCTURE COMPANY PROFILE

ALWAYS DELIVER MORE THAN EXPECTED



# NETWORKING AND TELECOMMUNICATION

## SERVICES WE OFFER



TRENCHING/DIGGING

LAYING OF OPTICAL FIBER CABLES

GAS PIPELINES TURNKEY PROJECTS

WATER PIPELINES TURNKEY PROJECTS

SOLAR TURNKEY PROJECTS



ALWAYS DELIVER MORE THAN EXPECTED



# Overview

- **Krishna Infrastructure** is formed by highly experienced and qualified professional in the various field of Infrastructure. Company commenced its business from Telecom & Gas Pipeline Projects.
- Krishna Infrastructure understood the growth pattern and current requirement of industry hence we are committed to our clients with a customer-oriented strategy, focusing on innovative and customized products & services with cost saving measures.
- Our core strength is our highly skilled competent motivated team, who are dedicated to achieve any tough targets set by clients with utmost quality and integrity.



# SERVICE AREA

**Krishna Infrastructure has expert full turnkey teams to take care of specific requirement of our prestigious clients :**

- Project team for Active and Passive network infrastructure deployment
- Operation and Maintenance of existing Network of Telecom & Electrical.
- Training of technical and behavioral module.
- Manpower resourcing
- Gas Pipelines Trunkey Project
- Water Pipelines Trunkey Projects



# OUR VALUES

**Krishna Infrastructure** a Company with a global strategy, but wherever we operate ,we act as a local company.

Our values serve as a compass for our actions and describe how we behave in the world.

**Leadership:** The courage to shape a better future

**Collaboration:** Leverage collective genius

**Integrity:** Be real

**Accountability:** If it is to be, it's up to me

**Passion:** Committed in heart and mind

**Diversity:** As inclusive as our brands

**Quality:** What we do, we do well



# RIGHT OF WAY PERMISSIONS

## STATUTORY PERMISSIONS FROM

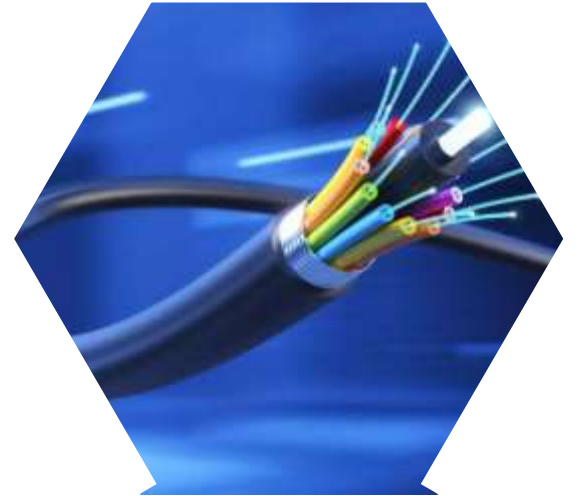
- ➔ State Highways
- ➔ Railway Department
- ➔ PWD
- ➔ Municipal Corporations
- ➔ Local Panchayat
- ➔ Irrigation department
- ➔ National highway Authorities etc.
- ➔ Cantonment Board
- ➔ Forest Department





# OPTICAL FIBER CABLE (OFC)

We help you plan your optical network with quality and performance to meet your long-term business goals. Our extensive experience in optical network planning gained in the implementation of networks, coupled with advance planning tools, will assure you that your optical network has the necessary coverage, capacity, hierarchy and topology characteristics to suit your development plans. We can also help plan end-user services and the systems to support them — providing you with differentiation in the market place.



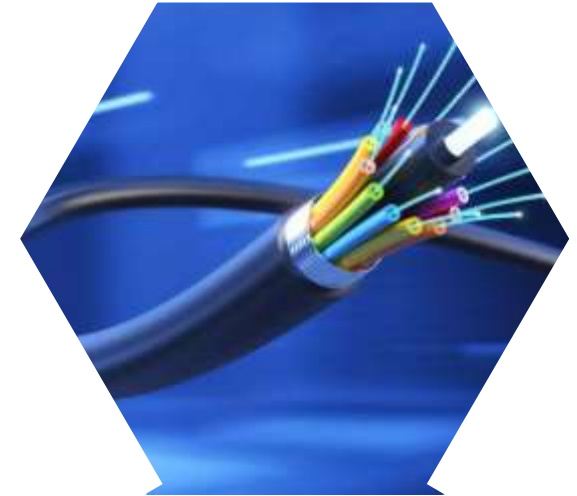


# SCOPE OF OPTICAL FIBER CABLE WORKS

We provide end-to-end solutions for Route Survey, Total Design, ROW Permissions, Trenching, and Associated Civil Works, including Horizontal Directional Drilling (HDD) and Boring Works. Our services encompass the supply, installation, and commissioning of

1. HDPE, GI, RCC Work Material, and PVC Pipes
2. Cables (OFC & JFC), Splice Closures, Optical Network Equipment, and Electronic Route Markers (RCC/Iron)
3. Chambers, Manholes, and Handholes

Our expertise ensures seamless execution and adherence to the highest quality standards.





## HORIZONTAL DIRECT DRILLING (HDD)

This technique is carried out by our experienced technical personnel and is utilized in situations where open trenching is not feasible due to congestion or when rapid cable or pipe laying is required. Our skilled team ensures efficient and precise execution, overcoming challenges to deliver optimal results in complex environments.





## TRENCHING/DUCTING/BACKFILLING BY JCB

We offer our clients a range of Trenching/digging, which are fabricated using high quality raw material. Our range is widely acclaimed for its unique features such as durability, compact sized, easy to use and longer service life. In addition, we offer our range at industry leading prices. Excavation of Trenches standard depth of trench will be as per specifications. We offer technically functional backfilling tampers that are available in varied specifications as per the requirements of our clients across the globe. These backfill tampers are compact designed for soil around foundations & other structures and for other compacting backfill in trenches.





# EPC Turnkey Project (Gas Pipeline Laying)

Krishna Infrastructure specializes in the installation and maintenance of natural gas pipelines across various terrains, focusing on smaller-scale projects in the domestic market, often collaborating with larger energy companies for regional distribution networks, utilizing expertise in trenching, pipe welding, and leak detection technologies while prioritizing safety compliance and local workforce engagement.

## Focus Area:

Primarily undertakes smaller pipeline laying projects for city gas distribution networks, industrial clients, and rural gasification schemes within specific geographical regions.





## Service Offered

- Pipeline trenching and excavation
- Pipe installation and welding
- Leak detection and repair
- Pressure testing and commissioning
- Cathodic protection services
- Pipeline maintenance and repair

## Expertise

- Proficiency in handling various pipe diameters and materials (steel, HDPE)
- Adaptability to diverse terrains (urban, rural, hilly)
- Stringent quality control measures to ensure project integrity





## SOLAR PROJETS

Krishna Infrastructure offering comprehensive solar EPC services including design, procurement, construction, and commissioning for smaller scale residential and commercial solar projects, with a focus on providing customized solutions and client-centric support within a local market reach; often specializing in rooftop installations and smaller grid-tied systems while maintaining competitive pricing and quick turnaround times. .

Focus on :

- Specialize in specific sectors like rooftop solar for homes, small businesses, or agricultural applications within a particular region.



**ALWAYS DELIVER MORE THAN EXPECTED**



### **Local expertise:**

- Strong understanding of local regulations, permitting processes, and access to local suppliers and labor.

### **Personalized service:**

- Prioritize building close relationships with clients, offering tailored solutions and dedicated project management.

### **Cost-effective approach:**

- We offer competitive pricing by optimizing project design and sourcing materials efficiently.

### **After-sales support:**

- Provide comprehensive operations and maintenance services to ensure system performance and customer satisfaction.





# Tool & Machinery

S.No.	Tools and Machines	Qty
1	HDD Machine with Vehicle	2
2	Tractor- Trolley	2
3	Water Tanker	4
4	Labours	200
5	Laptop	10
6	Utility testing equipment Kit	2
7	JCB Machine	2 Rented



# OUR CLIENTS



Sumit Gas Agencies Pvt Ltd



ALWAYS DELIVER MORE THAN EXPECTED



# THANK YOU

**Branch Office Address:**

**Krishna Infrastructure**

22, Golden Park , Mahesh Nagar  
Ambala Cantt (Haryana) 133001,

**Contact Person :** Deepak Kamra

**Contact Nos :** +91-9306649602  
+91-9779450845

**GSTIN No:** 06BMZPK4976K1Z0

**E-Mail ID :** ksninf@gmail.com

**ALWAYS DELIVER MORE THAN EXPECTED**